

SEE SHEET 2

NOTES

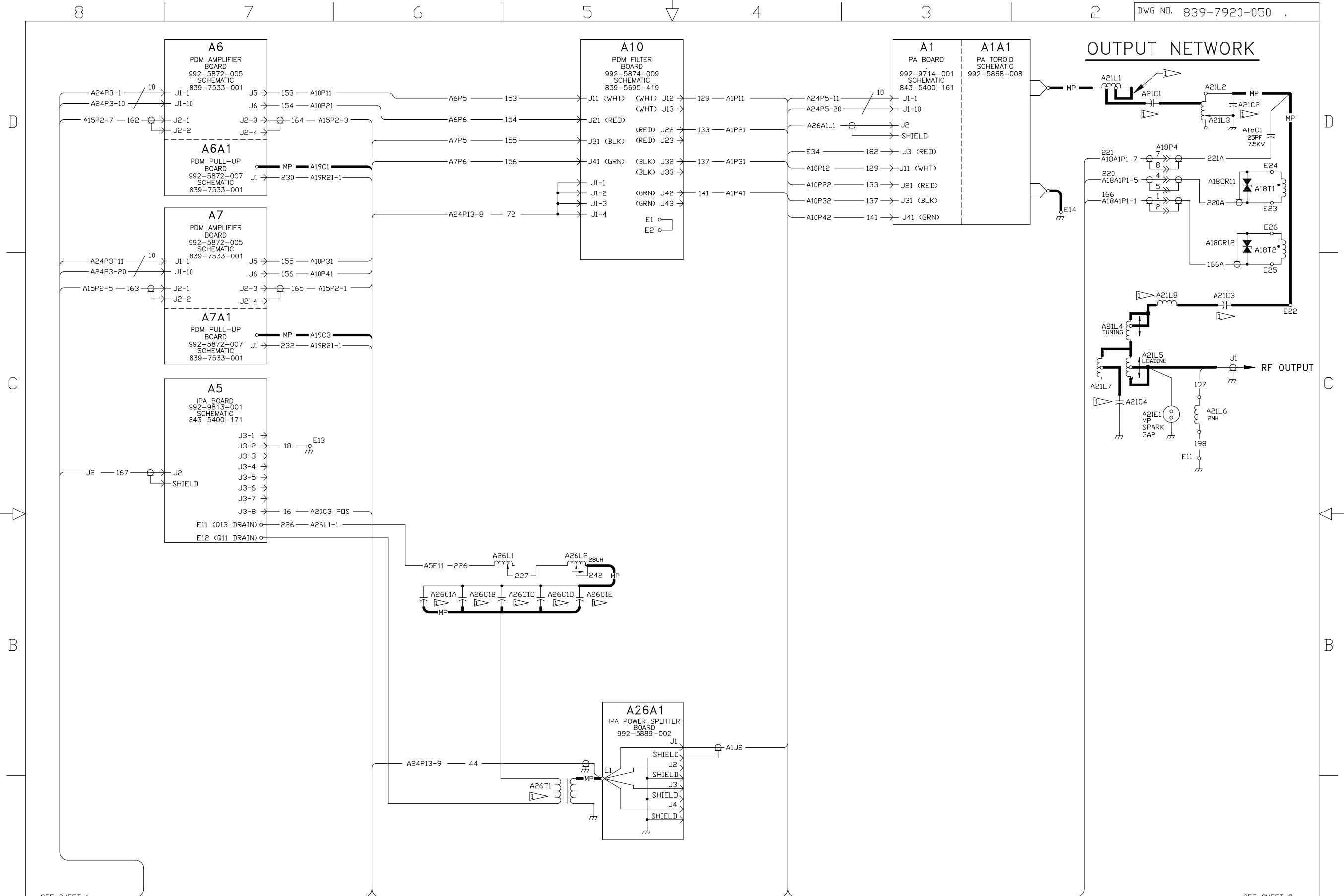
REV	DATE	DESCRIPTION
1	11-01-1996	REVISED SHEET 2
2	JAN 30, 2001	REVISED SHEET 2, AND 3

HARRIS

HARRIS CORPORATION
 BROADCAST COMMUNICATIONS
 P.O. BOX 4290
 QUINCY, ILLINOIS 62305

DRAWN BY	ROB FINLEY
DATE	MARCH 1990
ENG CHK	RICHARDS
PRJ ENG	HOLLENBERG
MFG ENG	SANDIDGE
CHECKED BY	SHEET 1 OF 3

TITLE	WIRING DIAGRAM, GATES 1 SINGLE PHASE
DWG NO.	839-7920-050
REV	F



SEE SHEET 1

SEE SHEET 3

NOTES
 ▷ FREQUENCY DETERMINED

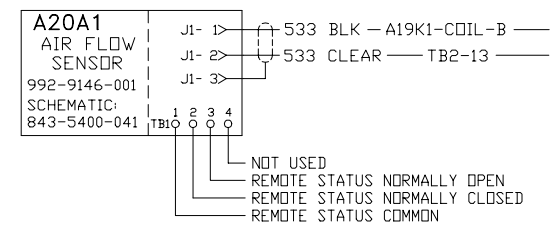
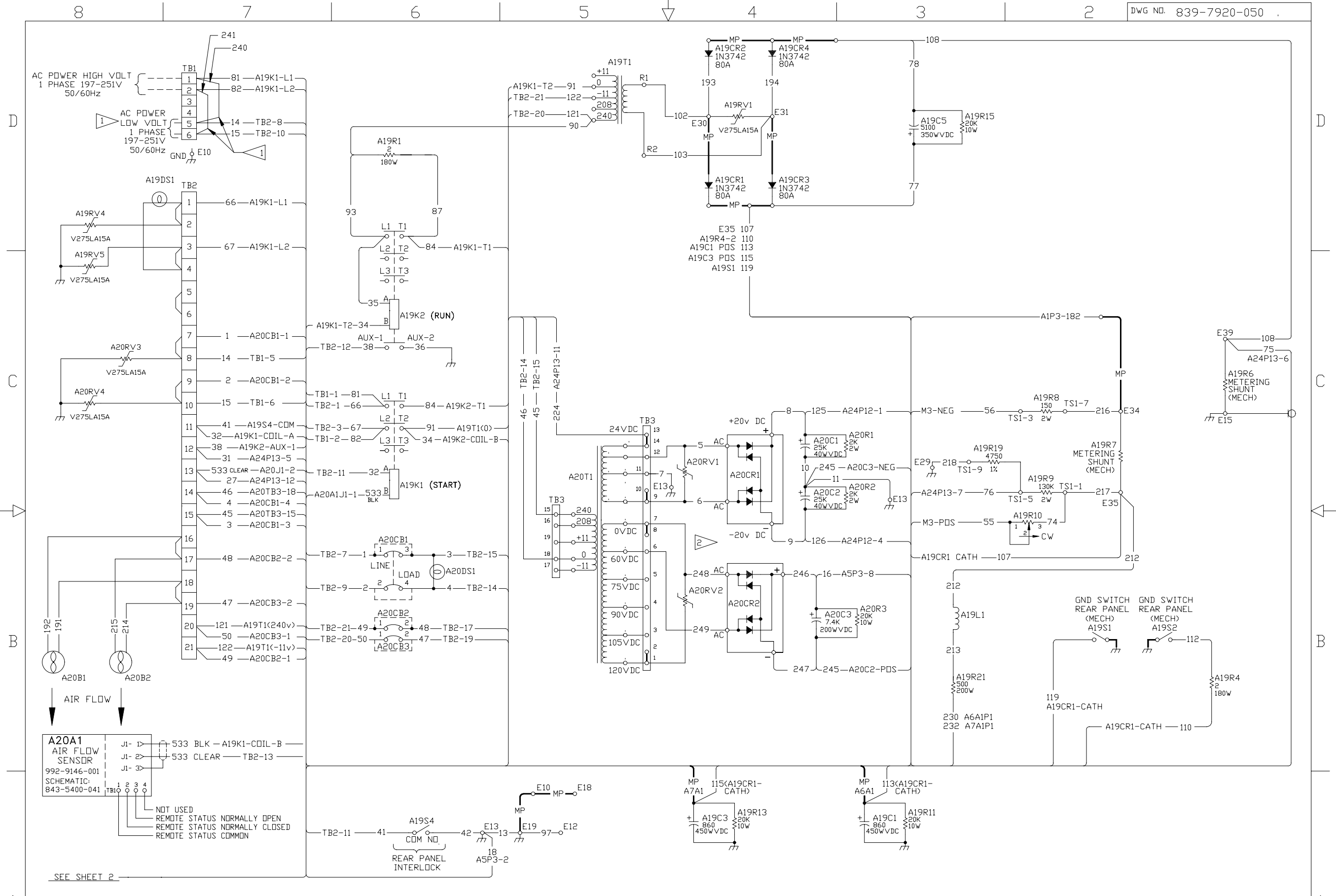
REV	LTZ	ZONE	DATE	DFTM	ENG	ECD	NBR
E	.		11-01-1996	SEC	SEC		41575
REVISED #'s A1 WERE 992-5868-015 / 839-5695-418							
F	.		JAN 30, 2001	SEC	SEC		46591
CHANGED PART NUMBERS AT A5							



HARRIS CORPORATION
 BROADCAST COMMUNICATIONS
 P.O. BOX 4290
 QUINCY, ILLINOIS 62305

DRAWN	ROB FINLEY
BY	
DATE	MARCH 1990
ENG	
CHK	RICHARDS
PROJ	SANDIDGE
ENG	
MFG	
ENG	
C	SHEET 2 OF 3

TITLE
 WIRING DIAGRAM, GATES 1
 SINGLE PHASE
 -
 DWG NO. 839-7920-050
 REV F



SEE SHEET 2

2. A20T1 SECONDARY TAP VOLTAGES SHOWN ARE INDICATIVE OF POWER SUPPLY OUTPUT VOLTAGE AVAILABLE FROM A SPECIFIC A20T1 TAP TO ZERO VOLTS REFERENCE. WIRE 249 IS CONNECTED TO TAP (NOT NECESSARILY #6) THAT RESULT IN NOMINAL 28V P-P PA MODULE RF DRIVE SIGNAL.
1. FOR SEPARATE HV AND LV POWER SUPPLY INPUT INSTALL LV POWER ON TERMINALS 5 & 6; HV POWER ON TERMINALS 1, AND 2 DELETE JUMPER WIRES #240 AND #241.

REV	TR	ZONE	DATE	DFTM	ENG	ECD NBR
1	C		01-03-1996	SEC	SEC	41051
2	F		JAN 30, 2001	SEC	SEC	46591

ADDED FANS, AIR SENSOR BOARD, AND A20CB2

UPDATED REVISION PER ECD



HARRIS CORPORATION
BROADCAST COMMUNICATIONS
P.O. BOX 4290
QUINCY, ILLINOIS 62305

DRAWN BY	ROB FINLEY
DATE	MARCH 1990
ENG CHK	RICHARDS
PRJ ENG	HOLLENBERG
MFG ENG	SANDIDGE
C	SHEET 3 OF 3

TITLE
WIRING DIAGRAM, GATES 1
SINGLE PHASE
POWER SUPPLY

DWG NO. 839-7920-050
REV F