

KFXD Boosts Its Power, Moves to 580 kc Channel

KFXD, Intermountain Network outlet at Boise-Nampa, Ida., formerly heard at 1230 kc with 250 w, began operation Jan. 27 with 1 kw day and night on 580 kc. Simultaneously KFXD launched its FM affiliate, KFXD-FM, on Channel 267 (101.3 mc) with 2500 w. The occasion was marked by a *Salute to KFXD* broadcast from Salt Lake City over the 15-station Intermountain system.

KFXD's new transmitter is located three miles south of Meridian, Ida., midway between Boise and Nampa. Owners of KFXD are Frank Hurt and his son, Ed. The latter, who serves as chief engineer, was injured seriously during erection of one of the station's new 327-ft. antenna towers, but is reported to be recovering rapidly.

KGBC, Galveston Daytime Outlet, Launched Feb. 1

KGBC Galveston went on the air Feb. 1 as a 1-kw daytime outlet on 1540 kc. Station is owned by James W. Bradner Jr., doing business as the Galveston Broadcasting Co.

Equipment includes a Raytheon transmitter and a 200-ft. guyed wind turbine tower. Speech input equipment was secured from Graybar Electric Co. including International Electronic desk with QRK turntables, a Western Electric console and a Presto recorder.

Jerry Fisher, formerly of KVIC Victoria, Tex., is manager of KGBC. Other staff members include: Dean Turner, formerly with the Texas Quality Network and more recently with WHHM Memphis, program director; Orland O. Dodson, news editor; Jesse Sims, chief engineer.

Firm in Lancaster, S. C. Is Awarded FM License

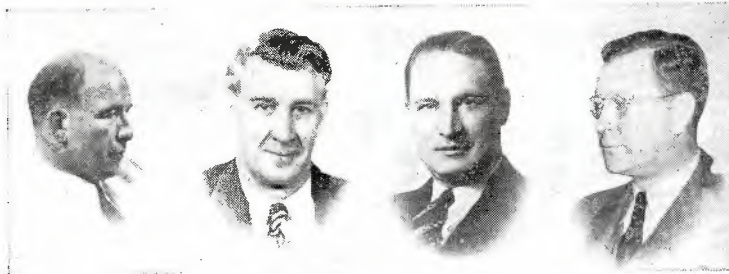
LICENSE to operate an FM station (with 3 kw transmitter and an 8-bay antenna, providing effective radiated power of 12.5 kw) has been granted to the Lancaster Broadcasting Co., Lancaster, S. C., it was announced last week.

All stock of Lancaster Broadcasting is owned by Springs Foundation, a charitable corporation, most of whose funds are derived from contributions from the Springs Cotton Mills and Col. Elliott Springs. Springs Cotton Mills operate seven mills in Lancaster, Chester, Kershaw and Fort Mill, S. C., and employ 10,000 persons.

Lancaster Broadcasting has announced that it is prepared to undertake the purchase and distribution of a minimum of 4,000 FM receiving sets, and it is initiating steps to obtain that many sets.

Lemon Is Director

LUTHER LEMON, treasurer of J. Walter Thompson Co., New York, with the firm since 1924, has been elected a director.



WAYS officers (l to r) include Mr. Whitmire, Mr. Thoms, Mr. Dowdy, Mr. Doughton.

WAYS BOOSTS POWER, PLANS FM OPERATION

WAYS Charlotte, N. C., celebrating its fifth anniversary last week, announced that it had increased its daytime operating power from 1 kw to 5 kw, with the frequency remaining at 610 kc. Station will continue to use 1 kw at night.



Mr. Goan

Simultaneously Walter H. Goan, WAYS general manager, announced that the Inter-City Advertising Co., which owns WAYS and WKIX Columbia, S. C., immediately would start construction of an FM outlet for WAYS. The FCC on Jan. 31 granted to WAYS a construction permit

Transmitter Work Begun For New Waterloo Outlet

WATERLOO Broadcasting Co., which received a grant recently to operate an AM station with 1 kw on 1090 kc at Waterloo, Iowa [BROADCASTING, Dec. 2, 1946], has started construction of its transmitter building, C. R. Miller, president of the firm, announces. Call letters of the station will be KAYX.

Plans call for a concrete block house with an insulated concrete roof. Transmitter and studio equipment will be supplied by Raytheon, and a Wincharger tower will be erected.

KAYX contemplates a tie-in with the Iowa Tall Corn Network and will use the UP wire service, Mr. Miller states.

Gets CPA Permit

PERMIT to construct a \$10,000 building has been granted B. Loring Schmidt, Salem, Ore., by the Facilities Review Committee, Civilian Production Administration. Mr. Schmidt's appeal from a local board's denial was granted on the ground that the application was "unusually meritorious for a small commercial project reasonably essential to the community and the applicant is a veteran of World War II who is to own and operate the business." Mr. Schmidt in late November was granted a CP for a 250 w AM station on 1490 kc in Salem.

authorizing FM operation with 20 kw on 102.9 mc.

In connection with the daytime AM operation of WAYS with increased power, the station announced that it has purchased a new transmitter, a Collins 21-A model. The transmitter is located in an 87-acre tract owned by WAYS in the Oakboro section eight miles from Charlotte.

For the FM operation, which will be on a six-hours-a-day basis duplicating AM programs, WAYS will build a new 435-ft. tower on this tract. Cost of construction is estimated at \$75,000, Mr. Goan said.

President of Inter-City Advertising Co. is George W. Dowdy. Other officers are: B. T. Whitmire, vice president; H. H. Thoms, secretary; J. H. Doughton, treasurer.

WESC TO START SOON AT GREENVILLE, S. C.

WESC, owned by the Greenville Broadcasting Co., is planning to begin operations early in March, as a 5 kw clear channel daytime independent on 660 kc, the station management has announced. Most of the staff selections already have been made.

Caldwell Cline, formerly with WBBM Chicago as night production supervisor, has been named program director. Ken Keese former program director for WATL Atlanta, will be musical director and organist, and his wife, Jackie Keese, formerly on the staff of WMAL Washington, will handle traffic. Promotion will be in charge of Harman I. Moseley, formerly promotion director of WWNC Asheville. Arthur Roberts, who has free-lanced on the West Coast for several years, will handle news. His wife, Helen Roberts, who has been handling the General Mills radio shows on the Coast for Knox-Reeves, will be copy chief. The chief engineer will be Lewis Elias.

Heading the entire organization is Scott Russell, formerly president of Bibb Manufacturing Co., one of the South's largest textile manufacturers, and former counsel for the Senate Committee on Postwar Economic Policy and Planning. Stockholders in Greenville Broadcasting Co., in addition to Mr. Russell, are Fred Symmes and Sidney Bruce, both prominent industrialists. Attorney for the company is Neville Miller.

Equipment for WESC was se-

KOMA OKLAHOMA CITY NOW A 50 KW OUTLET

KOMA Oklahoma City has joined the ranks of the nation's 50 kw stations, and Kenyon Brown, KOMA's general manager, heralds the event as a major step in the CBS affiliate's \$300,000 expansion program.

In preparation for its switch to increased power KOMA built a new transmitter plant on a 140-acre plot ten miles south of Oklahoma's capital city at Moore, Okla. The modern building houses the 50 kw Western Electric transmitter, and additional floor space has been provided for the station's FM transmitter.

M. W. Thomas, KOMA's chief engineer, directed the installation work, assisted by engineers George Berry and Harry Edwards. The new KOMA plant is described in an article in the January issue of the engineering publication, *Oscillator*.

The new 50 kw station began operation as KFJF on Sept. 7, 1923, when it went on the air with 20 w power. There have been several changes of ownership, and the station has occupied four different dial positions. Hearst Radio acquired KOMA in 1936, and three years later the FCC approved Hearst's sale of the station to the late J. T. Griffin. In 1946 KOMA won the top award in national competition for outstanding local public service.

Since last summer KOMA has originated *Oklahoma Roundup*, 8:15-9 a.m. daily, for the entire CBS network. The station is connected in management with another CBS affiliate, KTUL Tulsa. KOMA's frequency under its increased power remains at 1520 kc.

Cella, Turner Retire

J. B. CELLA and BURTON B. TURNER have announced their retirement from the California Vineyards Assn. and the Roma Wine Co. Brig. Gen. J. K. Herbert has been named head of the firm. Mr. Cella, founder of Roma, is retiring as vice president and director of Schenley Distillers Corp. and as chairman of the board of the California Vineyards Assn.

lected by Joe Chambers, the station's consulting engineer. A 5 kw Raytheon transmitter will be used.

The WESC management has announced that a number of stations are planning "salute" programs for WESC. These stations include: WGN Chicago; WAIM Anderson, S. C.; WOLS Florence, S. C.; WCSO Charleston, S. C.; WBT Charlotte; KRLD Dallas; WFAA-KGKO Dallas; WCCO Minneapolis; WTMA Charleston, KMOX St. Louis; WSM Nashville; WLW Cincinnati; WPTF Raleigh; WJR Detroit; WSB Atlanta; WCKY Cincinnati; WHO Des Moines; WCRS Greenwood, S. C.; WCOS Columbia, S. C.; KDKA Pittsburgh; KFAR Fairbanks, Alaska.